

Figure 1

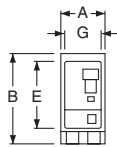


Figure 2

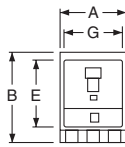
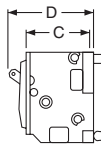


Figure 3



QO, QOB

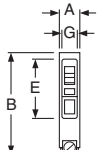


Figure 4

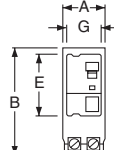
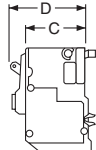


Figure 5



QO-GFI
QO-PL
QO-EPD

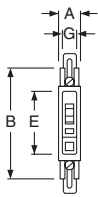


Figure 6

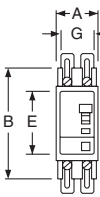


Figure 7

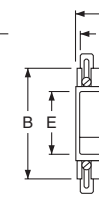
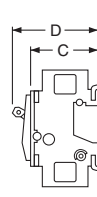


Figure 8



QOU, QYU
Low Ampere

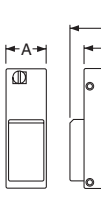


Figure 9
QO-PLPS

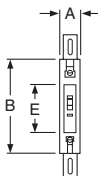


Figure 10

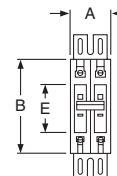


Figure 11

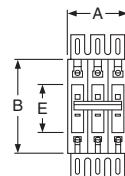
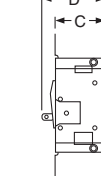


Figure 12



QOU
High Ampere

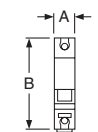


Figure 13

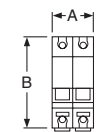


Figure 14

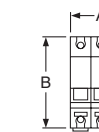


Figure 15

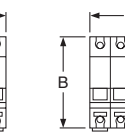
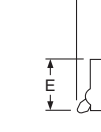


Figure 16



C60

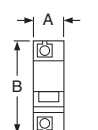


Figure 17

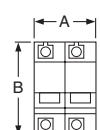


Figure 18

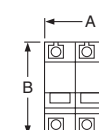


Figure 19

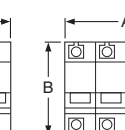
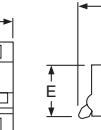


Figure 20



NC100

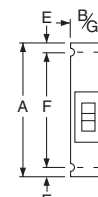


Figure 21

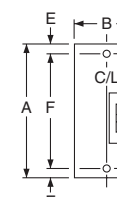


Figure 22

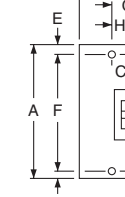
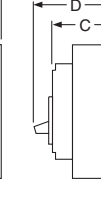


Figure 23



QO®, QOU, EH Circuit Breakers

Circuit Breaker Catalog No. Prefix	No. Poles	Fig. No.	Dimensions—Inches						
			A	B	C	D	E	F	G
QO, QOB	1	1	0.75	3.00▲	2.31	2.91	2.25	...	0.59
	2	2	1.50	3.00▲	2.31	2.91	2.25	...	1.34
	3	3	2.25	3.00▲	2.31	2.91	2.25	...	2.09
QOB-VH 150 A QOB-VH 110–150 A	2	2	3.0	5.72	2.53	4.90	3.78	...	2.85
	3	3	4.50	5.72	2.53	4.90	3.78	...	4.35
QO-PL QO-GFI QO-EPD	1	4	0.75	4.12■	2.31	2.91	2.25	...	0.59
	2	5	1.50	4.12■	2.31	2.91	2.25	...	1.34
	3	5	2.25	4.12■	2.31	2.91	2.25	...	2.09
QOU QYU Low Ampere	1	6	0.75	4.05♦	2.38	2.98	2.25	5.00▼	0.62
	2	7	1.50	4.05♦	2.38	2.98	2.25	5.00▼	1.37
	3	8	2.25	4.05★	2.38	2.98	2.25	5.00△	2.12
QOU High Ampere	1	10	0.75	4.45	2.37	2.96	2.25	6.78	...
	2	11	1.50	4.45	2.37	2.96	2.25	6.78	...
	3	12	2.25	4.45	2.37	2.96	2.25	6.78	...
Multi 9™ C60N	1	13	0.71	3.19	1.73	2.76	1.77
	2	14	1.42	3.19	1.73	2.76	1.77
	3	15	2.13	3.19	1.73	2.76	1.77
	4	16	2.84	3.19	1.73	2.76	1.77
Multi 9 NC100	1	17	1.06	3.19	1.73	2.76	1.77
	2	18	2.13	3.19	1.73	2.76	1.77
	3	19	3.19	3.19	1.73	2.76	1.77
	4	20	4.25	3.19	1.73	2.76	1.77
QO-PLPS Power Supply	2	9	1.45	4.35	2.42	3.11

▲ 35–70 A is 3.12 in; 80–100 A 2-pole and 70–100 A 3-pole are 3.50 in.
■ QO-PL is 4.55 in.
♦ 80–100 A 1-pole and 80–125 A 2-pole are 4.45 in.
★ 70–100 A 4.45 in.
▼ 80–100 A 1-pole and 80–125 A 2-pole are 6.78 in.
△ 70–100 A is 6.78 in.

QB, QD, QG, QJ, Q4, FA, FI, KA, KI, LA, MA, ME and MX Circuit Breakers

Circuit Breaker Catalog No. Prefix	No. Poles	Fig. No.	Dimensions—Inches							
			A	B	C	D	E	F	G	H
QB, QD, QG, QJ	2	22	6.47	3.00	3.02	3.93	□	4.25
	3	23	6.47	4.50	3.02	3.93	□	4.25	1.50	0.75
FAL, FHL, FCL ♦	1	21	6.00	1.50	3.16	4.13	0.44	5.13	1.50	...
	2	22	6.00	3.00♦	3.16	4.13	0.44	5.13
FIL, KAL, KHL, KCL, KIL	2 & 3	23	8.00	4.50	3.66	4.75	0.44	7.13	1.50	0.75
	2 & 3	23	11.00	6.00	4.06	5.84	0.88	9.25	2.00	1.00
MAL, MHL	2 & 3	23	14.00	9.00	4.53	6.50	1.66	10.69	3.00	1.50

□ Dimensions E are 1.59 in at ON end and 0.63 in at OFF end.
♦ FCL 2-pole circuit breaker dimension B is 4.50 as in Fig. 23.